

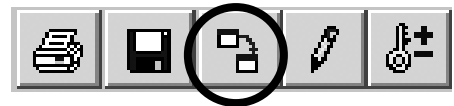


# Implementing ParSCORE

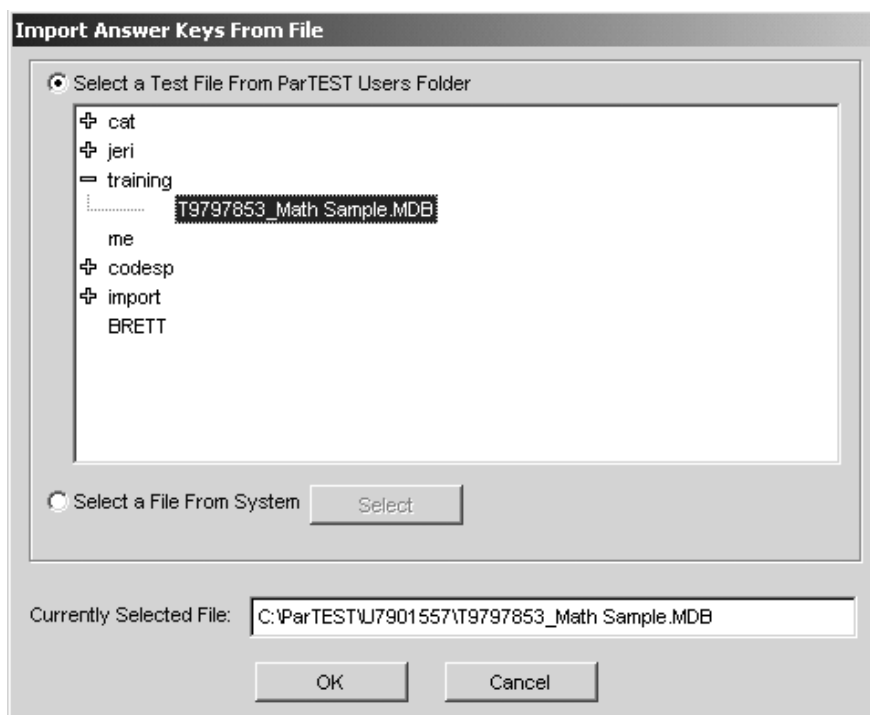
ParTEST *Online* saves the results to a Posting file (.POS) for use in ParSCORE. In ParTEST you created the test, in ParTEST *Online* the students completed the test, and now you can move the data to ParSCORE for detailed reports and for posting the Item Analysis data to the ParTEST Item Banks.

## **Step 1: Import the Answer Key File (KEY tab):**

In order to have the correct answers from ParTEST *Online* in ParSCORE you will need to import the answer key file.



- ✓ Select the icon shown above to import the Answer Key file.
- ✓ Select the correct user folder and test file.
  - Select a File from System if needed



### Examples of Directory locations:

ParTEST *Online* - X:\PARTESTOnline\Users\your login name

ParTEST *Online* will reside on your server. The test file will reside under the User's Folder – under a folder with the login name used to access ParTEST Manager.

X - *insert the drive letter for your server location*

- ✓ Select the Answer Key file for ParTEST *Online* file (.TOL)
- ✓ Verify the number of items, versions, & the correct answers

### **Step 2: Score the Test (Scoring tab):**

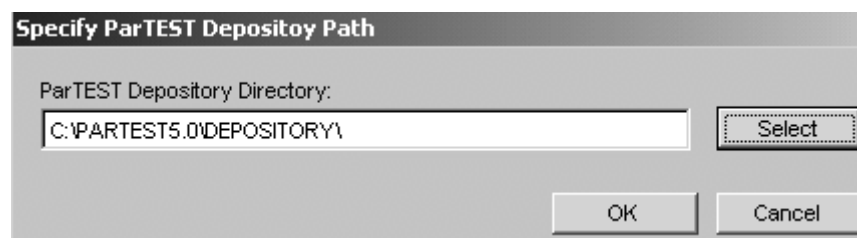
- ✓ Select the same drive and directory as the Answer Key file
- ✓ Select "Score from File"
- ✓ Select the .POS file
- ✓ Select your Scoring Options
- ✓ Select "Score" - The student's responses will be read from the file

### **Step 3: Post Item Analysis data to ParTEST:**

Once the test is completed you can post the Item Analysis data to the ParTEST Item Banks.

First you will need to specify the location of the ParTEST Depository Path.

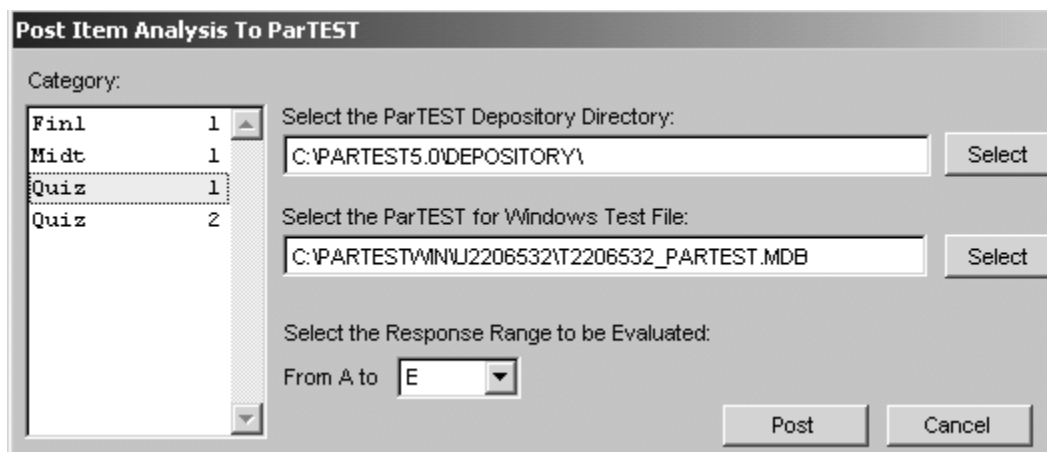
- ✓ Select the Options pull-down menu
- ✓ Select "Specify ParTEST Depository Path"
- ✓ Use the "Select" button to locate the Depository Path
  - C:\ParTEST5.0\Depository or X:\ParTESTWINLAN\Depository



#### Posting the Item Analysis Data:

- ✓ Select the Options pull-down menu
- ✓ Select "POST Item Analysis to ParTEST"
- ✓ Select the Category for your test
- ✓ Select "POST" to finish

The next time the Primary user logs to ParTEST – the Item Analysis data will be posted to the questions within the Item Bank.





**Congratulations!**

You have successfully completed your  
Scantron Software Training.